

## **BLINDER<sup>®</sup> UPDATE SOFTWARE INSTRUCTIONS**

The *TPX<sup>™</sup> Laser Jammer System* runs on Blinder<sup>®</sup> firmware.

The Blinder<sup>®</sup> Update software program is designed to run on a PC and serves two functions:

1. Update the system firmware to keep up with the latest technology
2. Adjust the system settings (jamming time, alarm time, etc.)

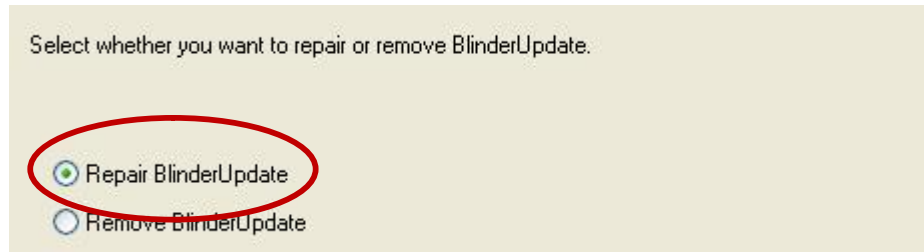
### **Installing the Blinder<sup>®</sup> Update Program**

1. Download and run the latest BLINDERUpdateX.X.X.msi file found at [www.AdaptivTech.com/support](http://www.AdaptivTech.com/support).

2.



Note: The next time you download the software, it will ask whether you want to “Repair” or “Remove” software. Choose “Repair”.



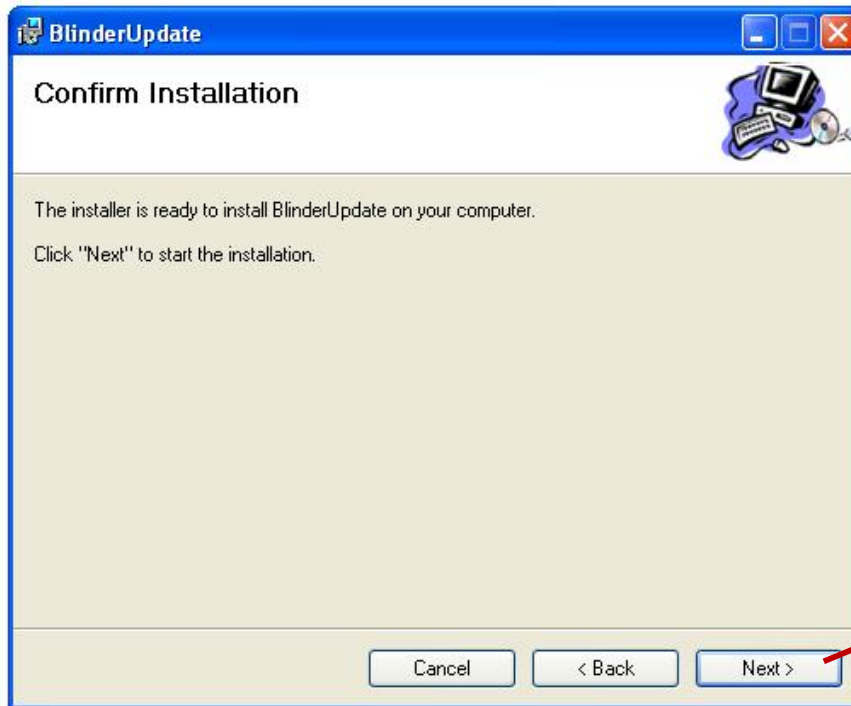
3.

Select install folder



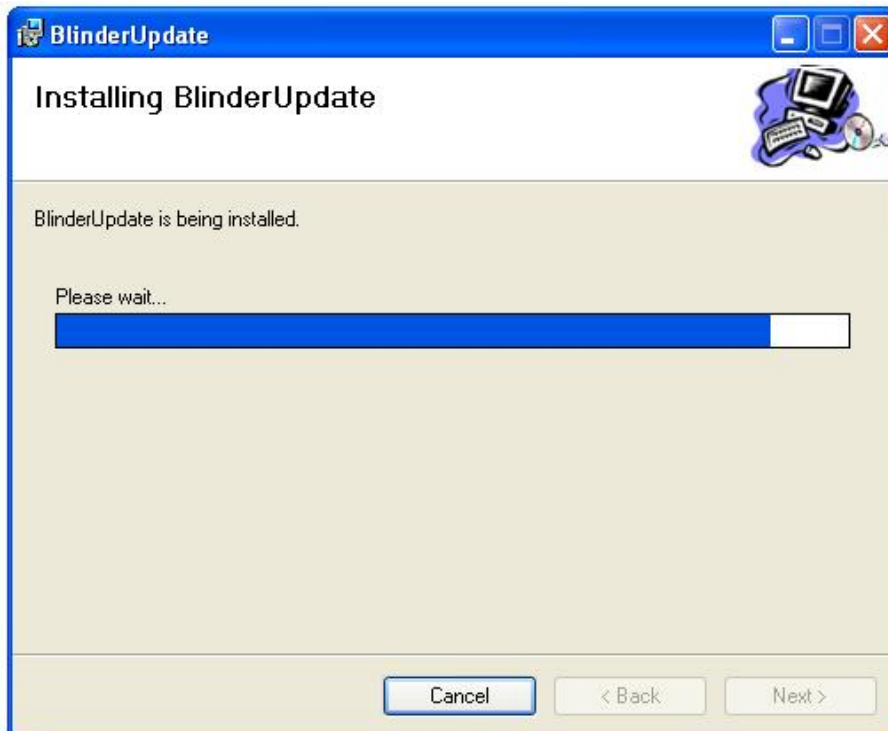
Click Here

4.

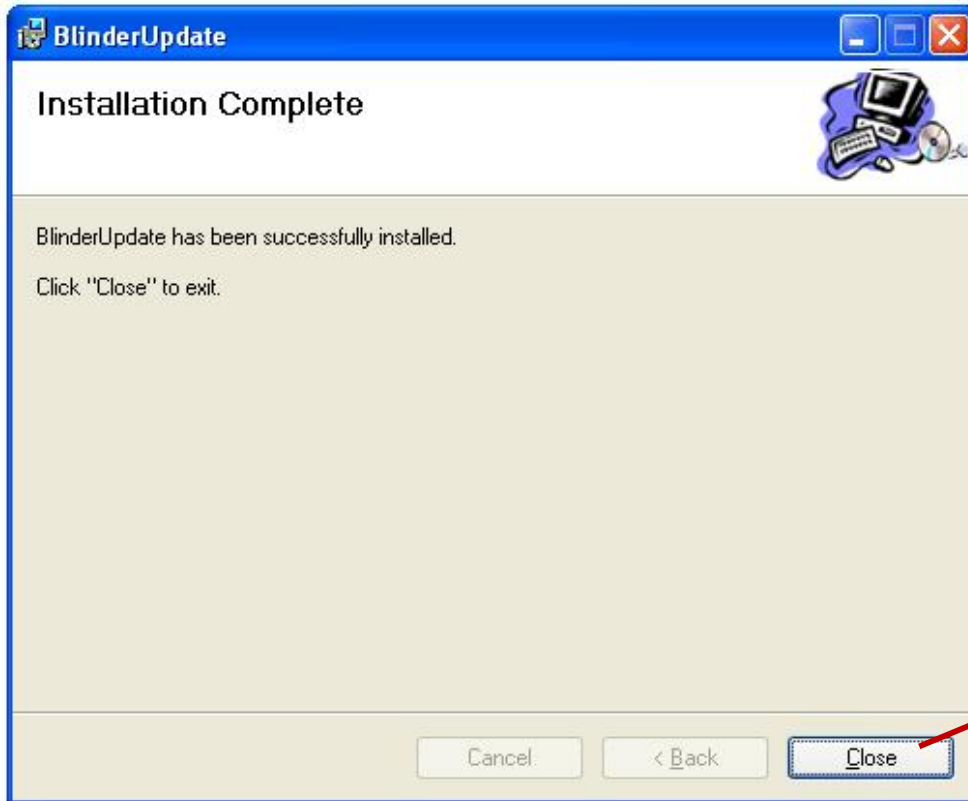


5.

Wait while the software is installed. It may take a few minutes.



6.

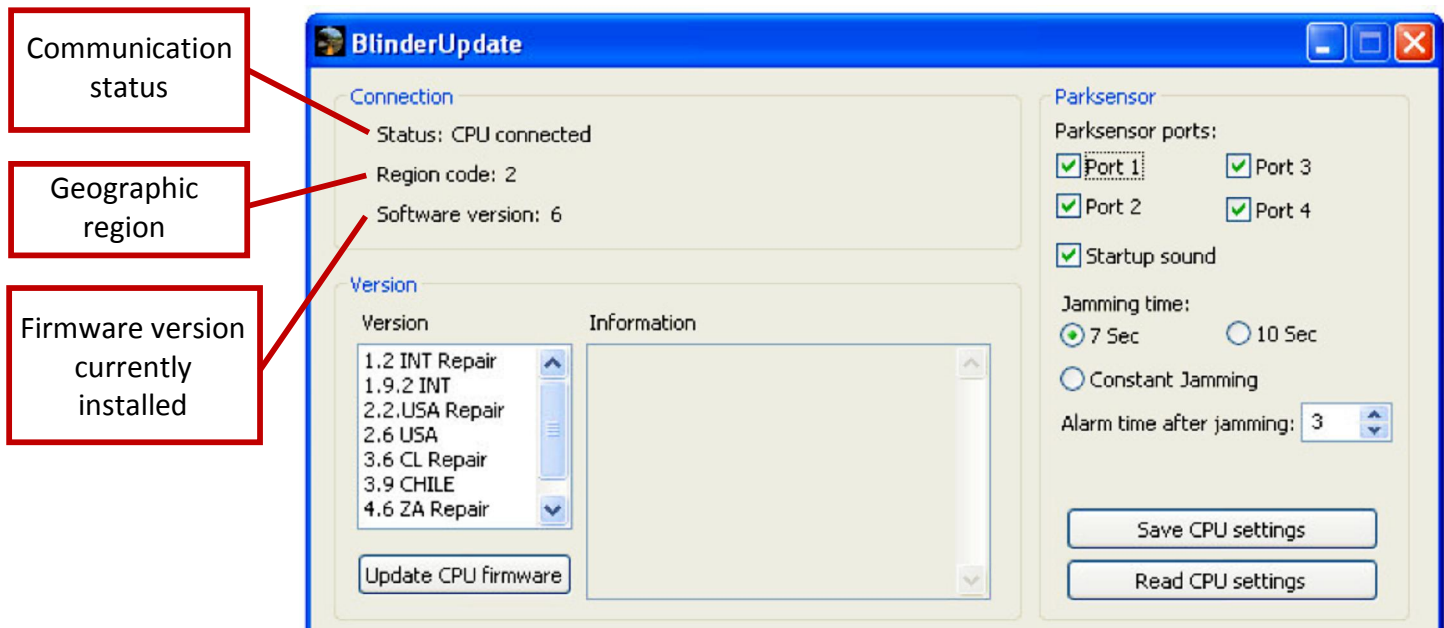


***Done!***

## USING THE BLINDER® UPDATE PROGRAM

### Connecting the TPX™ Laser Jammer System to the Computer

1. Disconnect all power from the *TPX™ Laser Jammer System*.
2. Connect the *Interface Box* to the computer with the included *USB Cable*.  
Note: The *Transponder(s)* do not need to be connected.
3. Start the *Blinder® Update* program. The following screen will appear. Verify that the Status reads “CPU connected” to ensure proper communication.



## Changing the Settings

1. Change the system settings as indicated.

The screenshot shows the BlinderUpdate software interface. The 'Parksensor' section is highlighted with a red oval. The 'Jamming time' section is also highlighted with a red oval. The 'Alarm time after jamming' dropdown is set to 3. The 'Save CPU settings' and 'Read CPU settings' buttons are also highlighted with red boxes. Callouts point to these elements:

- Not applicable (pointing to the Parksensor ports section)
- See notes below (pointing to the Jamming time section)
- Duration of alarm signal (sec) (pointing to the Jamming time section)
- Save and upload settings to system (pointing to the Save CPU settings button)
- Read current system settings (pointing to the Read CPU settings button)

### Jamming time:

**7 Sec** – When this setting is selected, the laser jammer will sense, alert, and jam any incoming laser signals for 7 seconds after the initial signal. After 7 seconds, the system will turn off its jamming and alerts for 1 minute before reactivating. This algorithm allows the laser gun to obtain your speed AFTER you have had 7 seconds to check your speed.

**10 Sec** – When this setting is selected, the laser jammer will sense, alert, and jam any incoming laser signals for 10 seconds after the initial signal. After 10 seconds, the system will turn off its jamming and alerts for 1 minute before reactivating. This algorithm allows the laser gun to obtain your speed AFTER you have had 10 seconds to check your speed.

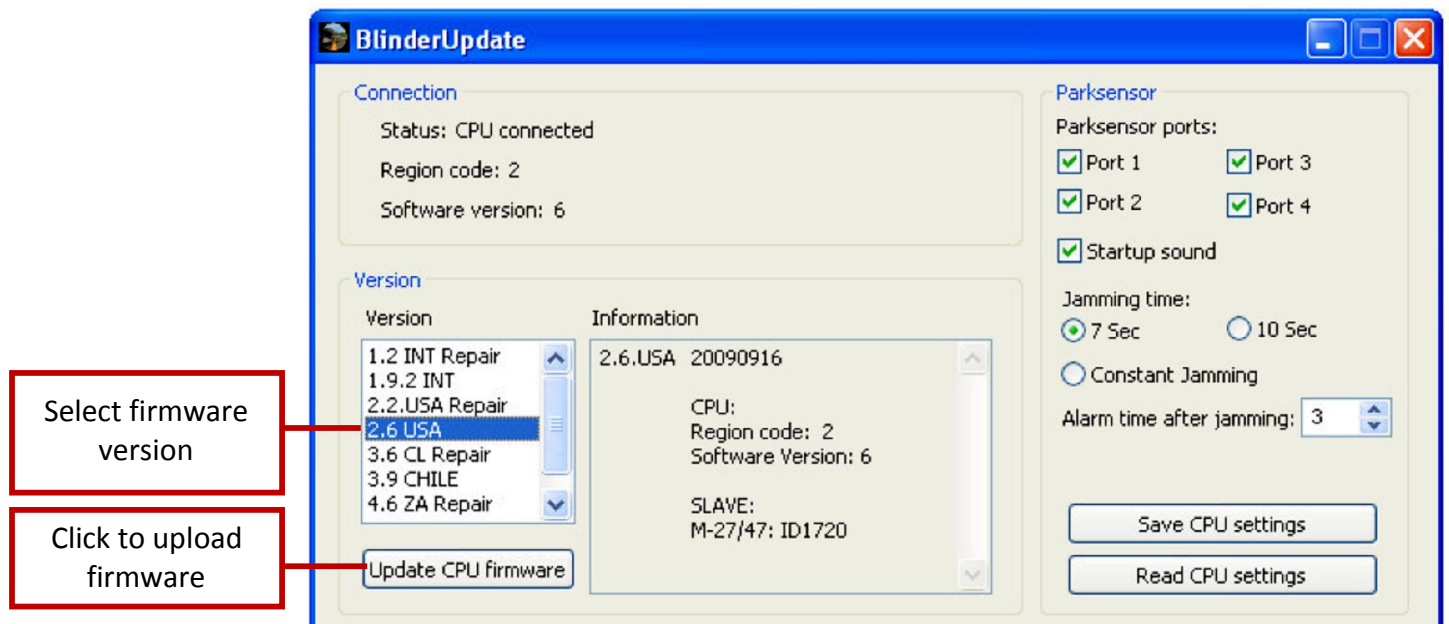
**Constant Jamming** – When this setting is selected, the laser jammer will sense, alert, and jam any incoming laser signal at all times. The system will not stop jamming or alerting after a given time period as with **7 Sec** and **10 Sec** modes.

## Uploading a new firmware version

1. To install a new firmware version, choose the appropriate version and click “Update CPU firmware” as shown. The program will confirm when the firmware has successfully uploaded.

Note: The Region Code cannot be changed. Only firmware from the proper region can be uploaded.

Note: “INT” is international version and covers all regions.



2. When the firmware upload is complete, close the program and remove the USB cable. The next time the system is powered up on the motorcycle, the *Interface Box* will automatically update the *Transponder(s)*. This takes approximately 10 seconds per *Transponder*.

***Ride safe!***